



Rail Access Sites

Cumberland County New Jersey

Property Details

A 250,000 sq ft privately-owned manufacturing/warehouse facility is available for sale or lease. The building features a second-floor with interior ramp access. The building is located in Bridgeton's Urban Enterprise Zone and is zoned industrial.

Rail Highlights

The Winchester and Western rail line is a **Dual Served** rail service that connects to both the CSX and Norfolk Southern national rail lines.

305ft

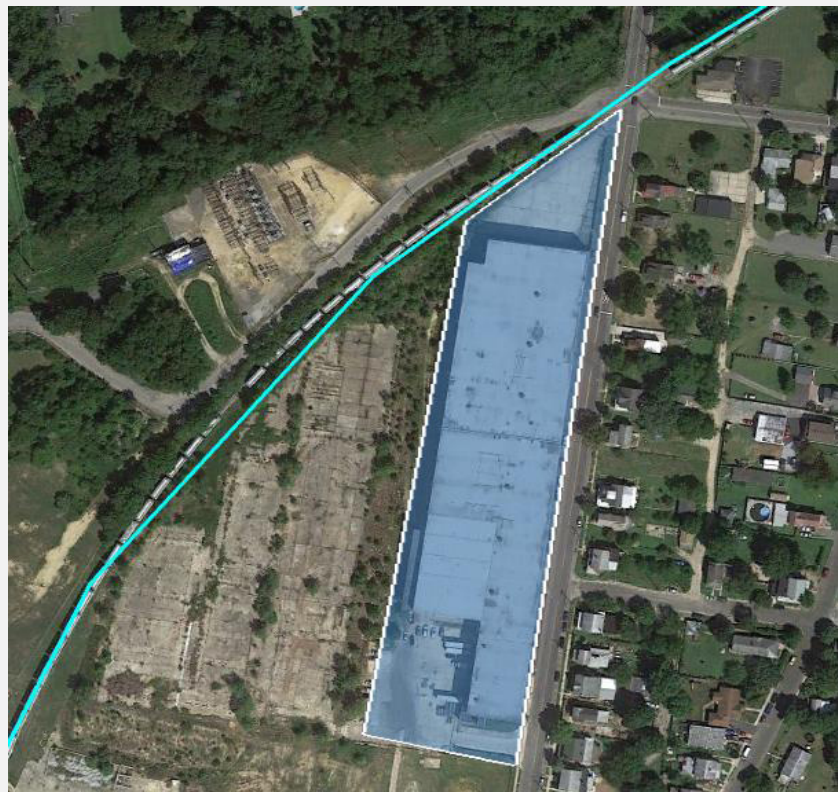
Rail Frontage

7

Car Capacity

1,200

Carloads Annually



**540 N. Laurel St.
Bridgeton, NJ**

Incentives/Zones

250K SF

Redevelopment Area

Urban Enterprise Zone



Cumberland County, New Jersey

Cumberland County, located in southern New Jersey, is strategically located amid the Northeast Corridor, with ready access to major highway, freight, water, and air transportation routes as well as 20% of the US population. While having breathtaking rural and scenic attractions, there are several areas around the county designated by the state and municipalities with available infrastructure and compatible zoning for industrial growth.

Site Profile

Zoning: Industrial

Owner: Private

Price: Negotiable

Infrastructure/Utilities

Electric: Atlantic City Electric

Gas: South Jersey Gas

Water: City of Bridgeton

Wastewater: CCUA

Demographics/Population

Cumberland: 150,972

25-Mile Radius: 504,987

50-Mile Radius: 4,805,038

100-Mile: 16,286,485

Workforce

The Cumberland County Workforce Development Board provides companies with several options to recruit new employees. This includes assisting in the application process for on the job training programs, application aide for federal employment tax credits, and employment screening and support services.

Contact Information

Cumberland County

Kim Ayres
ed@ccia-net.com
856-825-3700 ext. 1233

OmniTRAX

Ean Johnson, CECD
ejohnson@omnitrax.com
469-261-2083

New Jersey

Frank Danieli
fdanieli@choosenj.com
609-297-2196